

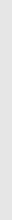


AW 22 COLLECTION

TRADE WORKBOOK
MAY – OCTOBER 2022







I AM MY OWN MUSE.
EXPRESSING MY SENSUALITY.
ELEVATED BY THE METICULOUS CRAFT
AND EXQUISITE DETAIL OF MY LINGERIE.
ELEVATED BY WACOAL.

HERE AT WACOAL WE AIM TO REPRESENT YOU. DESIGNING FOR THE BEAUTIFUL AND ASPIRATIONAL WOMEN THAT YOU ARE. YOU DESERVE NOTHING BUT THE BEST AND THAT'S WHY WE CONTINUE TO DESIGN EXQUISITE AND BESPOKE LINGERIE ON BEHALF OF YOU. ON BEHALF OF WOMEN.

As we continue to expand and grow our collections, we aim to support you, the contemporary women of today on your journey through life as you lead an ambitious path. We recognise your impeccable strength as a woman and aim to enhance this further by guiding you to feel at your most confident, at your most driven and at your most beautiful.

Our desire to provide a reflection of what it means to be a woman grows from season to season. Focusing on the finer details and all that makes for beautiful lingerie, designed for you, the wearer, to feel at your most confident.


Incorporating Japanese influence and its emphasis on innovative designs and technology is incredibly important to us. Constantly trying to adapt and push the boundaries in our designs, Florilège is a prime example of exactly that, a collection that we are very proud of. Through the advanced technique of yarn innovation, our Florilège lace collection is intricately woven with Japanese Mino 'Washi' paper yarn for a lace collection like no other, showcasing a soft, matte look and feel to the lace.

All new Crystal Flower holds a special place within our AW22 collection too. The intricate motifs and lace details are inspired by flowers blooming in an icy landscape as winter edges closer. Incorporating a sheer nude foundation these garments are designed to melt into your skin.

Expect to see the return of our most sought after lace collections too in brand new luxurious colourways you won't be able to resist. Raffiné flatters every skin tone in a striking shade of blue; Lace Perfection dazzles with its subtle iridescent sheen and frosted finish in Gardenia and Embrace Lace incorporates creamy highlights over a denim blue base.

There are a number of new style additions for AW22 which we cannot wait for you to cast your eyes over too. To name just a few, our Accord collection debuts a new UW Moulded Strapless Bra, whilst Ravissant launches a new all-lace Body with a deep plunging neckline, perfect for layering or worn to be seen styling. Turn to page 28 to find out more about these styles.

As always I wish you the very best for the season ahead.





CONTENTS

FASHION

Exploring Our Collections	25
This Season's Highlights	26
New Style Additions	28
Merchandising	29
Accord	36
Back Appeal	48
Crystal Flower	50
Eglantine	44
Embrace Lace	30
Florilège	52
Halo Lace	46
Lace Perfection	33
Le Minimizer	49
Raffiné	39
Ravissant	55
Réflexion	42



CONTINUITY

Awareness	59
Basic Beauty	59
B Smooth	60
Gloire	60
Instant Icon	61
Lace Affair	62
Lisse	63
Net Effects	64
Red Carpet	64

RESHAPE

Beauty Secret	68
Beyond Naked	66-67
Fit & Lift™	67
Wacoal's Digital Hub	69
Our POS	70



LACE PERFECTION



WACOAL AW22

WE 135 003 / WE 135 007

EMBRACE LACE

WA 853 291 / WA 067 491





ACCORD

I have an appreciation for true beauty.



WE 149 001 / WE 149 007

RÉFLEXION



WE 148 001 / WE 148 005

RAFFINÉ



WA 851 205 / WA 878 205

HALLO LACE

WE 600 710 / WE 600 766



FLORILÈGE



WE 600 703 / WE 600 770

FLORILÈGE

*A sense of self-assurance comes with
beautiful styles and indulgent fabrics.*

FLORILÉE



WE 600 783

WE 600 606 / WE 600 655



CRYSTAL FLOWER



WE 600 602 / WE 600 670



WE 600 506 / WE 600 570

RAVISSANT

RAVISSANT



WE 600 530

RAFFINÉ



WE 148 012 / WE 148 009



WA 855 303

BACK APPEAL

I choose Wacoal because true elegance is understated.

EXCLUSIVELY
CRAFTED FOR THE
CONTEMPORARY
WOMAN

EXPLORING OUR COLLECTIONS

We've arranged all of our designs into helpful categories, so you can find the right style for you with ease this season. You will also find levels for support, coverage and control, making it even simpler to find the perfect fit.

CATEGORIES

RESHAPE

Enhance your natural curves with a sumptuous second skin, to shape and tone for the perfect silhouette.

■■■ CONTROL LEVEL LIGHT
TO SMOOTH

RS

■■■ CONTROL LEVEL MODERATE
TO SHAPE

RS

■■■ CONTROL LEVEL FIRM
TO CONTROL

RS

NEW SHAPE

NS

MULTIWAY

MW

COVERAGE LEVELS

/// COVERAGE LEVEL 1

Half cup coverage, medium to light support. Straps are wider set and pull in from the side of the cup, enhancing a smaller bust. Some styles offer additional padding adding dimension.

/// COVERAGE LEVEL 2

Three quarter cup coverage covers a majority of the bust, offering medium to light support and low centre fronts. Straps can be wider set at front and back.

/// COVERAGE LEVEL 3

Full coverage envelops the whole bust and is high at the centre front. Close set front and back straps suit a larger cup and back size.

SUPPORT LEVELS

+++ GENTLE SUPPORT

Three quarter coverage or less, for light support with lower centre fronts and narrower backs. Straps can be set wider or narrower at the front and back. Lighter fabrics with more stretch offer natural shaping and lift for a more contemporary fashion look.

+++ MEDIUM SUPPORT

Covers majority of bust, but could have a lower centre front, with a large range of cup sizes. Straps can be set wider or narrower at the front and back. Featuring fabrics with more stretch that shape and lift, and more contemporary fashion looks.

+++ TOTAL SUPPORT

Full and firm support with semi-rigid fabrics and strong, supportive close-set backs. With some side boning, firm wires, wide hook and eye, and special design features for the fuller figure. Suitable for both bigger back and cup sizes. Lifts, re-shapes and solves a variety of figure dilemmas.

THIS SEASON'S HIGHLIGHTS

CRYSTAL FLOWER

Invite your body to play part of the design story with Crystal Flower, our new 'barely there' collection, which sees fine sheer mesh melt into the body.

We adore how the exposed seam work and tattoo-like motifs rest upon a maple syrup sheer tulle; the embroidery capturing the beauty of flowers in bloom. The attention to detail is second to none, from the intricate stitch work to the sparkling diamantes - Crystal Flower is a luxurious offering for the new season.

The collection - as pictured - features a new UW Plunge Bra. Based on Lumiere Douce WE 150 003, the new Crystal Flower shape features a centre front that has been slightly lowered and an apex that has been raised to create a true padded plunge shape. A great alternative to our moulded plunge styles, the new Crystal Flower UW Plunge Bra offers a great rounded shape with added cleavage. Without it being heavily padded or with push up pads, expect a lighter look and an overall cleaner finish.



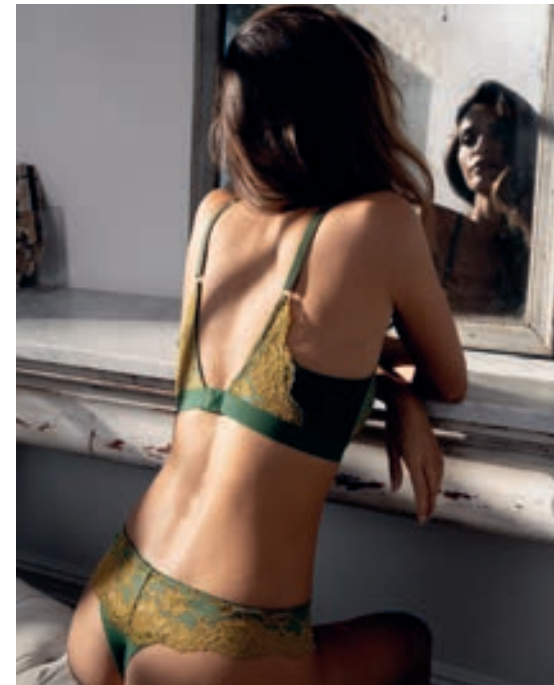


FLORILÈGE

Combining your love of lace with contemporary innovative design techniques, this AW22 we introduce all-new Florilège.

The Florilège collection is one that truly celebrates Wacoal's Japanese heritage. As a brand, it is incredibly important to us that we continue to push the boundaries of design, so much so, Florilège is unique, like no other. Each style is crafted from a lace which uses an innovative Mino 'Washi' paper yarn, which originates from Japan.

The yarn is blended with cotton which creates the light, soft handle lace used across the collection. Featuring a matte finish, all styles are available in two chic colourways. Peridot embodies gorgeous forest green hues with golden chartreuse highlights, whilst Inky Flower is a two tone charcoal marl grey.



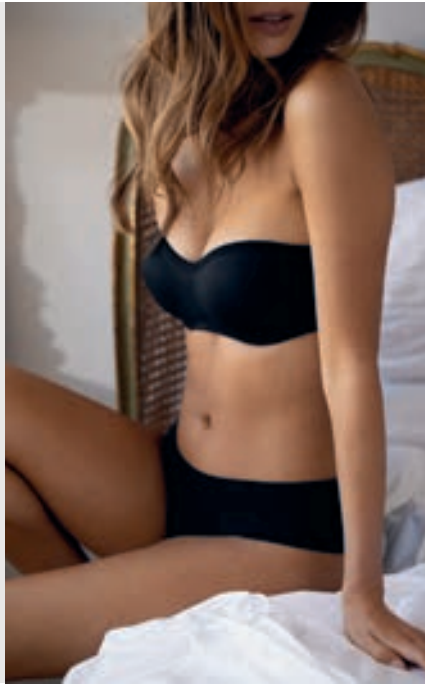
THE STORY OF MINO 'WASHI' PAPER

Considered a 'National Treasure' of Japan, Mino paper is manufactured in the ancient 1300 year old Mino region of Gifu situated around the beautiful river NaGara and abundant forests. The Mino paper is produced from the Mulberry plant and has famously been used for historical documents and books currently stored in 'Shosoin', housing treasures dating back to the Silk Road and Nara period (710-784AD). It is also famously used more recently in exquisite lanterns and umbrellas.

NEW STYLE ADDITIONS

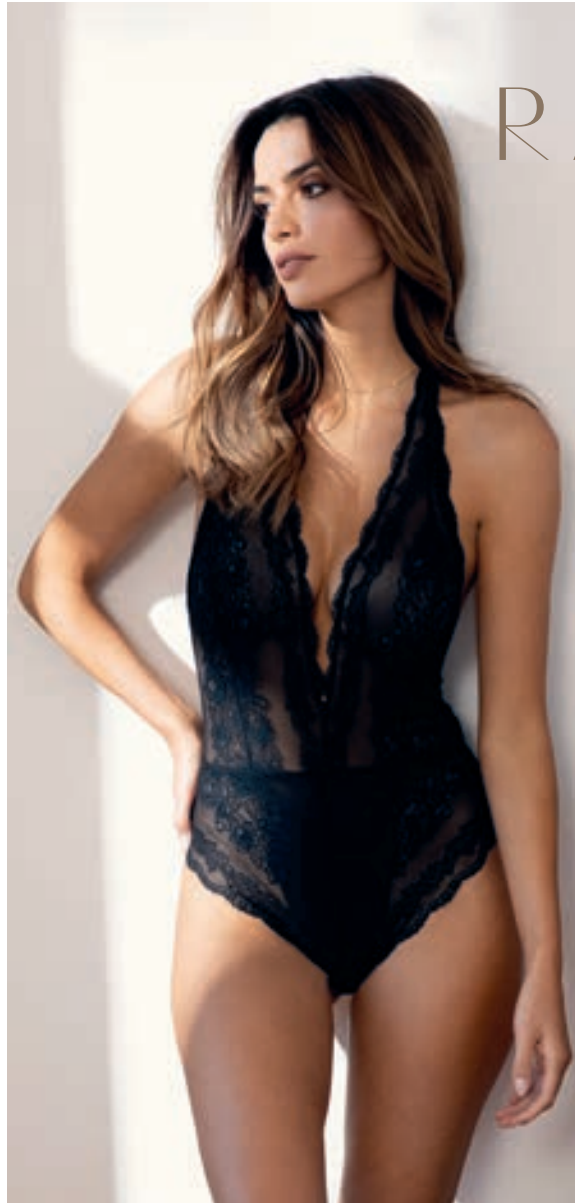
| As well as brand new collections, this AW22 we're introducing new style additions to existing, much-loved, ones too. There are a number of new styles across this season's edit; below we've cast a spotlight on a couple of our favourites.

ACCORD



Following the success of Accord's launch last season, we have extended the collection with a new strapless style. Crafted from the same soft touch, Italian made fabric, the UW Strapless Bra is designed to contour your body, creating the perfect silhouette under any outfit. Boasting a sweetheart neckline and moulded cup design, this practical solutions piece also features intermittent slots across the top edge of the bra for complete versatility of wear with its vast options for strap placement. Much like all other styles from the Accord collection, the UW Strapless Bra uses extra soft handle elastics for comfort without compromising on fit. Debuting in Black and Frappe.

RAVISSANT



A real stand out piece for the season, Ravissant for AW22 welcomes an all-lace Body. Designed to be seen, this Body can be worn on its own or styled as an outerwear piece. Crafted from a fine stretch floral lace, with scallop edge detailing, it features a deep plunge neckline with halter neck styling and an open back design. Available in dress sizes S-XL, at both the neck and lower back we've included adjusters, much like what you'd find on a bra strap, for an adjustable, secure fitting. The Body also features an inner mesh Tanga for modesty. Launching in Black and new season colourway Scarlet.

MERCHANDISING

We at Wacoal always carefully consider the release dates of our seasonal collections with you, the retailer, in mind so you can show your customers in-store that there are many ways to wear and feel sublime in Wacoal lingerie.

MAY



LACE PERFECTION
Gardenia



ACCORD
Black
Frappe



EMBRACE LACE
Wild Wind/Egret



EGLANTINE
Argent



LE MINIMIZER
Argent

JUN



RAFFINÉ
Sapphire
Black



RÉFLEXION
Beige Soiree



JUL



HALO LACE
Zinfandel

AUG



FLORILÈGE
Inky Flower
Peridot



SEPT



BACK APPEAL
Black
Rose Dust



OCT



RAVISSANT
Scarlet
Black



CRYSTAL FLOWER
Maple Sugar

EMBRACE LACE

No new season would be complete without it, our best-selling Embrace Lace collection. All styles are crafted from a two tone stretch lace, and for AW22 Embrace Lace is available in Wild Wind/Egret for AW22. The soft denim blue contrasts against the embroidered highlights in cream, which etch out the collection's signature floral design. With a selection of delicately crafted bras, briefs, and a chemise to choose from, you will be spoilt for choice with Embrace Lace.



WILD WIND/EGRET (976)
Fashion/Available:



BLACK (BLK)
Continuity



DELICIOUS WHITE (135)
Continuity



EBONY/SHIFTING SAND (076)
Continuity



NATURALLY NUDE/IVORY (271)
Continuity



WA 065 191 UNDERWIRE BRA

- All-stretch floral lace cups
- Top cup is lined in the larger sizes for extra support and to maintain fit
- Two-ply mesh back
- Fully adjustable stretch straps
- Two hook and eye adjustment



UK	32-38 C	32-40 D-DD	32-38 E
EU	70-85 C	70-90 D-E	70-85 F
FR	85-100 C	85-105 D-E	85-100 F
AUS/NZ	10-16 C	10-18 D-DD	10-16 E
US	32-38 C	32-40 D-DD	32-38 DDD
JP	70-85 D	70-90 E-F	70-85 G



UK	32-38 C	32-40 D	32-38 DD-E
EU	70-85 C	70-90 D	70-85 E-F
FR	85-100 C	85-105 D	85-100 E-F
AUS/NZ	10-16 C	10-18 D	10-16 DD-E
US	32-38 C	32-40 D	32-38 DD-DDD
JP	70-85 D	70-90 E	70-85 F-G

PRICE



WA 853 191 CONTOUR BRA

- Soft stretch contour cups with smooth matte moulded outer
- All-stretch lace frame and back
- Two-ply mesh back
- Fully adjustable stretch straps
- Two hook and eye adjustment



UK	34-38 B	32-38 C-E	32-36 F
EU	75-85 B	70-85 C-F	70-80 G
FR	90-100 B	85-100 C-F	85-95 G
AUS/NZ	12-16 B	10-16 C-E	10-14 F
US	34-38 B	32-38 C-DDD	32-36 G
JP	75-85 C	70-85 D-G	70-80 H



UK	34-38 B	32-40 C	30-40 D-E	32-38 F
EU	75-85 B	70-90 C	65-90 D-F	70-85 G
FR	90-100 B	85-105 C	80-105 D-F	85-100 G
AUS/NZ	12-16 B	10-18 C	8-18 D-E	10-16 F
US	34-38 B	32-40 C	30-40 D-DDD	32-38 G
JP	75-85 C	70-90 D	65-90 E-G	70-85 H

PRICE



WA 853 291 UNDERWIRE PLUNGE BRA

- All-stretch floral lace cups
- Plunge neckline
- $\frac{3}{4}$ stretch foam cup for shaping and modesty
- Lace under bust frame and wing
- Two-ply mesh back
- Fully adjustable, convertible straps allow this bra to be worn over the shoulders or crossed at the back
- Two hook and eye adjustment

UK	34-38 B	32-38 C-D	32-36 DD-E
EU	75-85 B	70-85 C-D	70-80 E-F
FR	90-100 B	85-100 C-D	85-95 E-F
AUS/NZ	12-16 B	10-16 C-D	10-14 DD-E
US	34-38 B	32-38 C-D	32-36 DD-DDD
JP	75-85 C	70-85 D-E	70-80 F-G

PRICE



J Hook



WA 852 191 SOFT CUP BRA

- Two-ply mesh back
- Wide underband for anchorage and support
- All-stretch floral lace cups with wide camisole straps
- J Hook strap adjustment allows this bra to be worn as a racerback
- Hook and eye adjustment



UK	32-40
EU	70-90
FR	85-105
AUS/NZ	10-18
US	32-40
JP	70-90



UK	30-40
EU	65-90
FR	80-105
AUS/NZ	8-18
US	30-40
JP	65-90

PRICE



WA 067 491 BOYSHORT

- Low-rise styling
- All-stretch lace front and back

S, M, L, XL

PRICE



WA 064 391 BIKINI

- Mid-rise waist with medium back coverage
- All-stretch floral lace front
- Sheer mesh back for a smooth, easy fit and feel

S, M, L, XL

PRICE



WA 848 191 TANGA

- Mid-rise waist with minimal back coverage
- All-stretch floral lace front and back

S, M, L, XL

PRICE



WA 814 191 CHEMISE

- Lace bodice and hem with mesh body
- Adjustable split spaghetti straps
- Finished length 82cm / 32"

S, M, L, XL, XXL

PRICE

LACE PERFECTION

We welcome back for AW22, much-loved Lace Perfection. Returning in Gardenia, we have taken inspiration from icy winter evenings with our use of a crisp toned stretch lace which offers a subtle iridescent sheen for a beautiful frosted finish. All styles are crafted using Somar lurex yarns for a finer and softer finish. Continuity colours also available.



GARDENIA (GAD)
Fashion / Available:



CAFÉ CRÈME (CAC)
Continuity



CHARCOAL (CHL)
Continuity



WE 135 002 UW BRA

- Two section lace outer cup
- Stretch neckline lies flat against the skin with some stretch for comfort and flexibility of fit
- Sheer fine elastic at neckline to maintain fit
- Stretch lace bottom cup lined with two section sheer mesh gives a natural shape and uplift
- Inner mesh side sling gives additional support
- Stretch lace wings are lined with a stretch mesh, offering a feminine appearance whilst offering strength and support
- Top cup is lined in the larger sizes for extra support and to maintain fit
- Delicate scallop lace edge along the neckline and underband
- Fully adjustable stretch straps
- Two hook and eye adjustment

UK	34-38 B	32-38 C	30-38 D-F	30-36 FF
EU	75-85 B	70-85 C	65-85 D-G	65-80 H
FR	90-100 B	85-100 C	80-100 D-G	80-95 H
AUS/NZ	12-16 B	10-16 C	8-16 D-F	8-14 FF
US	34-38 B	32-38 C	30-38 D-G	30-36 H
JP	75-85 C	70-85 D	65-85 E-H	65-80 I

PRICE



WE 135 004 UW CONTOUR BRA

- Ultra-smooth soft outer cup fabric for a natural shape - same cups as WA 853 117 La Femme Contour Bra
- Delicate thin binding along neck edge for a flat finish that sits flat against the body
- Stretch lace underband and wings are lined with a stretch mesh, offering a feminine appearance whilst offering strength and support
- Fully adjustable, convertible straps allow this bra to be worn over the shoulders or crossed at the back
- Two hook and eye adjustment

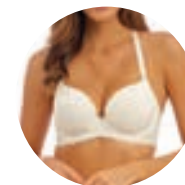


UK	34-38 B	32-38 C	30-38 D-E
EU	75-85 B	70-85 C	65-85 D-F
FR	90-100 B	85-100 C	80-100 D-F
AUS/NZ	12-16 B	10-16 C	8-16 D-E
US	34-38 B	32-38 C	30-38 D-DDD
JP	75-85 C	70-85 D	65-85 E-G



UK	34-38 B	32-38 C	30-38 D-E	32-36 F
EU	75-85 B	70-85 C	65-85 D-F	70-80 G
FR	90-100 B	85-100 C	80-100 D-F	85-95 G
AUS/NZ	12-16 B	10-16 C	8-16 D-E	10-14 F
US	34-38 B	32-38 C	30-38 D-DDD	32-36 G
JP	75-85 C	70-85 D	65-85 E-G	70-80 H

PRICE





Back detail



WE 135 008 NON WIRED BRALETTE

- All-lace cups with darts
- Delicate lace scallop edge runs along the neckline and centre back
- Sheer fine elastic offers stretch for flexibility of fit and light support
- Lace back detail runs from the shoulder strap down into the underband
- Two-ply mesh on the fold at the side for a flat finish
- Soft underband elastic for comfort and support whilst keeping the bralette in place
- Single hook and eye adjustment

S, M, L, XL

SIZE CONVERSION CHART

	B	C	D	DD
32	S	S	M	M
34	S	M	M	L
36	M	M	L	XL
38	L	XL	XL	XL

*Sizes are in UK sizing. Turn to page 70 for global sizing conversion.

PRICE



WE 135 003 UW PLUNGE BRA

- High apex lace outer cup with dart
- Plunging neckline
- Ultra-soft and light push up pad gives cleavage, uplift and adds dimension
- Graduated foam mould cups give extra dimension and push up at base of cup, but maintains a thin and light neck edge for a smooth finish
- Centre front V-styling
- Stretch lace wings are lined with a stretch mesh in larger sizes, offering a feminine appearance whilst offering strength and support
- Delicate scallop lace edge along the neckline and underband
- Fully adjustable stretch straps
- Two hook and eye adjustment

UK	32-36 A	30-38 B-D	30-36 DD
EU	70-80 A	65-85 B-D	65-80 E
FR	85-95 A	80-100 B-D	80-95 E
AUS/NZ	10-14 A	8-16 B-D	8-14 DD
US	32-36 A	30-38 B-D	30-36 DD
JP	70-80 B	65-85 C-E	65-80 F

PRICE



WE 135 005 BRIEF

- Mid-rise waist with full back coverage
- Lace front brief with lace scallop edging detail along the waist
- Flatteringly contoured front lining for extra coverage and modesty
- Two-ply mesh back on the fold sits flat to the body to avoid VPL

S, M, L, XL

PRICE



WE 135 006 SHORT

- Low-rise waist with medium back coverage
- Lace front short with light waist elastic and scallop edging
- Two-ply mesh back on the fold sits flat to the body to avoid VPL

S, M, L, XL

PRICE



WE 135 007 TANGA

- Low-rise waist with minimal back coverage
- All-lace stretch tanga with delicate scallop edging along the full leg line

S, M, L, XL

PRICE



Back detail



WE 135 009 CHEMISE

- All-lace triangular shaped cup with dart to add shape and avoid flattening the bust
- Sheer fine elastic at neckline to maintain fit and accommodate a variety of bust shapes and sizes
- Pretty lace underband, helps to maintain fit and ensure cups stay in place
- Lace back detail
- Relaxed fit body
- Fine stretch fully adjustable spaghetti straps

S, M, L, XL

PRICE

ACCORD

Following the success of Accord's launch last season, we have extended the collection with a new style addition for AW22. Crafted from the same soft touch, Italian made fabric, the UW Strapless Bra is designed to contour your body, creating the perfect silhouette under any outfit. Boasting a sweetheart neckline and moulded cup design, the new Accord strapless also features intermittent slots across the top edge of the bra for complete versatility of wear with its vast options for strap placement. Available in Black and Frappe.



BLACK (BLK)

Continuity

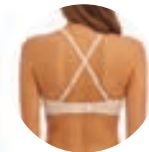
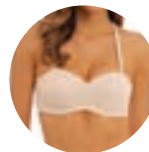
* New Continuity for WE 600 415 / Available:



FRAPPE (FRP)

Continuity

* New Continuity for WE 600 415 / Available:



WE 600 415 UW STRAPLESS BRA*

- Moulded strapless bandeau underwire bra
- Soft two way stretch Italian made fabric offering mid weight feel for comfort
- Two-ply non padded mould cup offers a natural shape
- Extra soft handle elastics and strapping for comfort without compromising on fit
- *Stay4Sure* gripper elastic along the top edges of the bra so you can feel confident the garment will not move in wear
- Elastic along top of bra has intermittent slots for strap hooks, giving a wide variety of positions and configurations
- Fully adjustable, detachable straps
- Printed label directly onto the garment fabric for a flat finish
- Soft touch hook and eye adjustment

UK	32-38 B-E
EU	70-85 B-F
FR	85-100 B-F
AUS/NZ	10-16 B-E
US	32-38 B-DDD
JP	70-85 C-G

PRICE



WE 600 409 UW MOULDED NON PADDED BRA

- Soft two way stretch Italian made fabric offering mid weight feel for comfort and support
- Two-ply non padded mould cup offers a beautiful rounded shape
- Extra soft handle elastics and strapping for comfort without compromising on fit
- Pretty apex keyhole detailing
- Cup neck edge and underarm has a seamless edge finish that sits flat against the body
- Deep shaped 'wrapping' back style for all day comfort, support and a smooth silhouette
- Soft fold over elastic along the underarm and top of wing for a flat finish against the body
- Printed label directly onto the garment fabric for a flat finish
- Fully adjustable straps
- Soft touch hook and eye adjustment

UK	34-38 B	32-38 C-E
EU	75-85 B	70-85 C-F
FR	90-100 B	85-100 C-F
AUS/NZ	12-16 B	10-16 C-E
US	34-38 B	32-38 C-DDD
JP	75-85 C	70-85 D-G

PRICE



WE 600 402 UW PLUNGE BRA

- Smooth contour cups for a natural shape – same cups as WE 149 004 Réflexion UW Contour Bra
- Delicate thin binding along the neck edge for a flat finish, that sits flat against the body
- Sleek, soft two way stretch Italian made outer cup fabric
- Extra soft handle elastics and strapping for comfort without compromising on fit
- Deep shaped 'wrapping' back style for all day comfort, support and a smooth silhouette
- Printed label directly onto the garment fabric for a flat finish
- Fully adjustable straps
- Soft touch hook and eye adjustment

UK	34-38 B	32-40 C	30-40 D-E	30-38 F
EU	75-85 B	70-90 C	65-90 D-F	65-85 G
FR	90-100 B	85-105 C	80-105 D-F	80-100 G
AUS/NZ	12-16 B	10-18 C	8-18 D-E	8-16 F
US	34-38 B	32-40 C	30-40 D-DDD	30-38 G
JP	75-85 C	70-90 D	65-90 E-G	65-85 H

PRICE



WE 600 413 NON WIRED BRA

- An innovative bra shape developed from a concept of the Japanese Human Science research centre
- Soft two way stretch Italian made fabric offering mid weight feel for comfort and support
- Innovative inner slings at front and side cup wrap the bust for gentle support
- Deep shaped 'wrapping' back style for all day comfort, support and a smooth silhouette
- Extra soft handle elastics and strapping for comfort without compromising on fit
- Soft fold over elastic along the underarm and top of wing for a flat finish against the body
- Printed label directly onto the garment fabric for a flat finish
- Fully adjustable straps
- Soft touch hook and eye adjustment

XS, S, M, L, XL

SIZE CONVERSION CHART					
	A	B	C	D	DD
30	XS	XS	XS		
32	XS	XS	S	M	M
34	S	S	M	M	L
36	S	M	M	L	XL
38	M	L	XL	XL	

*Sizes are in UK sizing. Turn to page 70 for global sizing conversion.

PRICE



WE 600 416 UW FRONT FASTENER BRA

- Soft two way stretch Italian made fabric offering mid weight feel for comfort and support
- Neat silver coloured metal front fastener clasp opening at centre front.
- Smooth straight back style for all day comfort, support and a smooth silhouette
- Smooth contour cups for a natural shape – same cups as WE 149 004 Réflexion UW Contour Bra
- Delicate thin binding along the neck edge for a flat finish, that sits flat against the body
- Sleek, soft two way stretch Italian made outer cup fabric
- Extra soft handle elastics and strapping for comfort without compromising on fit
- Printed label directly onto the garment fabric for a flat finish
- Fully adjustable, convertible straps have clip fasteners to allow this bra to be worn with conventional straps or as a halter or with a crossed back

UK	34-38 B	32-38 C	30-38 D	30-36 DD	30-34 E
EU	75-85 B	70-85 C	65-85 D	65-80 E	65-75 F
FR	90-100 B	85-100 C	80-100 D	80-95 E	80-90 F
AUS/NZ	12-16 B	10-16 C	8-16 D	8-14 DD	8-12 E
US	34-38 B	32-38 C	30-38 D	30-36 DD	30-34 DDD
JP	75-85 C	70-85 D	65-85 E	65-80 F	65-75 G

PRICE





WE 600 455 BRIEF

- Based on WE 108 025 Intuition Brief
- Low-rise brief sits on hips
- Soft two way stretch Italian made fabric offering mid weight feel for comfort
- Free cut waist and leg edges
- The fabric has an 82% cotton content
- Smooth front and back finish with smooth free cut side seams for no VPL
- Printed label directly onto the garment fabric for a flat finish
- Tailored gusset

XS, S, M, L, XL

PRICE



WE 600 470 TANGA

- Based on WE 108 027 Intuition Tanga
- Low coverage tanga shape
- Soft two way stretch Italian made fabric offering mid weight feel for comfort and support
- Free cut waist and leg edges
- The fabric has an 82% cotton content
- Smooth front and back finish with smooth free cut side seams for no VPL
- Printed label directly onto the garment fabric for a flat finish
- Tailored gusset

XS, S, M, L, XL

PRICE



WE 600 456 FULL BRIEF

- Based on WE 108 028 Intuition Full Brief
- High-rise brief sits just under the waist
- Soft two way stretch Italian made fabric offering mid weight feel for comfort and support
- Free cut waist and leg edges
- The fabric has an 82% cotton content
- Smooth front and back finish with smooth free cut side seams for no VPL
- Printed label directly onto the garment fabric for a flat finish
- Tailored gusset

S, M, L, XL, XXL

PRICE

RAFFINÉ

Raffiné in Sapphire, for AW22, is everything we'd hoped for, and more. Delicately crafted from a stretch floral lace, this elegant collection has been designed to elevate your everyday lingerie experience. With the success of the collection in recent seasons, we have extended the Raffiné offering with three design additions. Now featuring a Minimiser Bra, Control Brief and Mid Rise Brief, the variety of available styles makes this collection one not to be missed.



SAPPHIRE (SAR)
Fashion / Available:



BLACK (BLK)
Continuity

* New Continuity for WE 148 012,
WE 148 009 & WE 148 005 BLK/Available:



WHITE (WHE)
Continuity



FRAPPE (FRP)
Continuity



WE 148 001 UW BRA

- Three section average wire cup gives a natural shape
- Stretch lace top cup has a sheer fine elastic along the neckline to maintain fit
- Stretch lace overlay at bottom cup
- Ultra-fine all over lace bottom cup is lined and has a hidden dart for maximum shaping
- Intricate dropped centre front, adorned with a stretch lace
- Ultra-fine all over lace wing, lined with mesh for support and comfort
- Top of wing trimmed with decorative elastic
- Scoop centre back style offers optimum support and ensures straps stay in place
- Underwires vary in strength across sizes to ensure a good level of support and shape
- Fully adjustable decorative straps
- Soft touch hook and eye adjustment

UK	34-38 B	32-38 C-E	32-36 F
EU	75-85 B	70-85 C-F	70-80 G
FR	90-100 B	85-100 C-F	85-95 G
AUS/NZ	12-16 B	10-16 C-E	10-14 F
US	34-38 B	32-38 C-DDD	32-36 G
JP	75-85 C	70-85 D-G	70-80 H

PRICE



WE 148 003 UW PLUNGE BRA

- Based on the signature WE 135 003 Lace Perfection UW Plunge Bra
- High apex lace outer cup with dart
- Plunging neckline
- Ultra-soft and light push up pad gives cleavage, uplift and adds dimension
- Graduated foam mould cup, gives extra dimension and push up from the base of the cup, but maintains a thin and light neck edge for a smooth finish
- Centre front V-styling
- Stretch lace wings are lined with a stretch mesh, offering a feminine appearance, whilst offering strength and support
- Delicate scalloped lace edge along the neckline and underband
- Fully adjustable straps
- Soft touch hook and eye adjustment

UK	32-36 A	30-38 B-D	30-36 DD
EU	70-80 A	65-85 B-D	65-80 E
FR	85-95 A	80-100 B-D	80-95 E
AUS/NZ	10-14 A	8-16 B-D	8-14 DD
US	32-36 A	30-38 B-D	30-36 DD
JP	70-80 B	65-85 C-E	65-80 F

PRICE



WE 148 004 UW CONTOUR BRA

- Smooth contour cups for a natural shape – same cups as WA 853 117 La Femme Contour Bra
- Delicate thin binding along neck edge for a flat finish that sits flat against the body
- Sleek, ultra-smooth and soft outer cup fabric
- Stretch lace centre front and cradle
- Power mesh wings, with scooped centre back for support and to ensure straps stay in place
- Fully adjustable straps
- Soft touch hook and eye adjustment

UK	34-38 B	32-40 C	30-40 D-E	32-38 F	32-36 FF
EU	75-85 B	70-90 C	65-90 D-F	70-85 G	70-80 H
FR	90-100 B	85-105 C	80-105 D-F	85-100 G	85-95 H
AUS/NZ	12-16 B	10-18 C	8-18 D-E	10-16 F	10-14 FF
US	34-38 B	32-40 C	30-40 D-DDD	32-38 G	32-36 H
JP	75-85 C	70-90 D	65-90 E-G	70-85 H	70-80 I

PRICE



Back detail



WE 148 008 NON WIRED BRALETTE

- Delicate lace scallop runs along the neck edge and centre back, with sheer fine elastic offering stretch for flexibility of fit and light support
- Decorative stretch lace at bottom cup
- Top and bottom cup lined with fine stretch mesh for added support
- Lace back detail runs from shoulder strap down to underband
- Decorative bottom band elastic, with underband elastic placed underneath for added support, that will keep the bralette in place
- Soft touch hook and eye adjustment

S, M, L, XL

SIZE CONVERSION CHART

	B	C	D	DD
32	S	S	M	M
34	S	M	M	L
36	M	L	L	XL
38	L	XL	XL	XL

*Sizes are in UK sizing. Turn to page 70 for global sizing conversion.



WE 148 012 UW MINIMISER BRA*

- Based on the Le Minimizer Bra WE BFA 105 with a new decorative lace scallop runs along the neckline for a softer look
- Beautiful lace is stitched with flat seams for a perfectly formed supportive cup, with a powermesh lined overbust panel. It softens the bust shape to reduce the appearance and projection for a minimised effect
- Lace front strap overlays the fixed adjustable straps, for increased fit and support
- Back offers greater support through the wider band and deeper powermesh wings. Essential for fuller figure sizing.
- Soft touch hook and eye adjustment

UK	34-42 D	32-42 DD-E
EU	75-95 D	70-95 E-F
FR	90-110 D	85-110 E-F
AUS/NZ	12-20 D	10-20 DD-E
US	34-42 D	32-42 DD-DDD
JP	75-95 E	70-95 F-G

PRICE



WE 148 009 CONTROL BRIEF*

- High-rise waist with full back coverage
- Stretch lace front panel lined with powermesh for firm tummy control
- Ruching detail down the centre back seam gives definition and shape
- Free cut back leg edge sits flat against the skin and is invisible under clothes. Same control fabric as used in Beauty Secret WE GRA 331 & WE GRA 231

S, M, L, XL, XXL

PRICE



WE 148 005 BRIEF*

- Mid-rise waist with full back coverage
- Decorative stretch all-over lace centre front panel lined with stretch mesh
- Stretch lace side panels
- Two-ply sheer mesh back panel, folded at the leg edge to give a flat finish and avoid VPL
- Decorative waist elastic

XS, S, M, L, XL

PRICE



● ○ ● CONTROL LEVEL LIGHT

WE 148 010 FULL BRIEF

- Decorative all-over lace front panel
- Front panel has a lightweight rigid liner for a smoothing effect
- Stretch lace with delicate scallop edge at side leg
- Sheer mesh side panels, with stretch mesh liners
- Two-ply sheer mesh back panel, folded at the leg edge to give a flat finish and avoid VPL
- Decorative waist elastic

● ○

S, M, L, XL, XXL

●

XS, S, M, L, XL, XXL

PRICE



● ● ○ ●

WE 148 016 SHORT

- Mid-rise waist with cheeky back coverage
- Full lace short, with delicate scallop detailing around the leg edge
- Decorative waist elastic

XS, S, M, L, XL

PRICE



● ● ○ ●

WE 148 007 TANGA

- Low-rise waist with minimal back coverage
- Side lace panels, with delicate scallop detailing around the leg edge
- Decorative waist elastic

● ○

S, M, L, XL

● ●

XS, S, M, L, XL

PRICE



● ● ○

WE 148 011 CHEMISE

- Delicate lace scallop runs along the neck edge and centre back, with sheer fine elastic for stretch, flexibility of fit and light support
- Decorative stretch all-over lace at the bottom cup
- Bottom cup lined with stretch mesh for added support
- Decorative elastic at under bust
- MicroModal® fabric skirt, with Eco-Smart elastane, provides a soft handle finish and drape
- Fully adjustable spaghetti straps

S, M, L, XL

PRICE

RÉFLEXION

Bring your inherent femininity to the fore with Réflexion, a luxurious all-embroidery collection that makes its return for AW22. The true beauty of this collection lies in the attention for detail, so be sure to admire the guipure motifs, the diamante charms and the stretch mesh which features a subtle spot design. Available in Beige Soiree, the champagne inspired colour is one that will be complementary on all skin tones.



BEIGE SOIREE (BGS)
Fashion/Available:



TEA ROSE (TEE)
Limited Continuity



WE 149 001 UW BALCONY BRA

- Stunning embroidered darted cups
- Inner two-ply mesh cup sling for added support and shape
- Embroidered side cradle
- Powermesh wings for added comfort and support, adorned with spot detail embroidery
- Guipure motif details at front straps
- Fully adjustable straps
- Soft touch hook and eye adjustment



UK	34-38 B	32-38 C	30-38 D-DD	30-36 E
EU	75-85 B	70-85 C	65-85 D-E	65-80 F
FR	90-100 B	85-100 C	80-100 D-E	80-95 F
AUS/NZ	12-16 B	10-16 C	8-16 D-DD	8-14 E
US	34-38 B	32-38 C	30-38 D-DD	30-36 DDD
JP	75-85 C	70-85 D	65-85 E-F	65-80 G



UK	30-44 A-G
EU	65-100 A-I
FR	80-115 A-I
AUS/NZ	8-22 A-G
US	30-44 A-I
JP	65-100 B-J

PRICE



WE 149 002 UW BRA

- Two section embroidery outer cup
- Sheer elastic at neckline maintains fit and gives a flat finish against the bust
- Rigid bottom cup with hidden two section lining construction gives natural shape and uplift
- Keyhole centre front with diamante charm detail
- Soft touch hook and eye adjustment
- Fully adjustable straps



UK	34-38 B	32-38 C	30-38 D-F
EU	75-85 B	70-85 C	65-85 D-G
FR	90-100 B	85-100 C	80-100 D-G
AUS/NZ	12-16 B	10-16 C	8-16 D-F
US	34-38 B	32-38 C	30-38 D-G
JP	75-85 C	70-85 D	65-85 E-H



UK	30-44 A-G
EU	65-100 A-I
FR	80-115 A-I
AUS/NZ	8-22 A-G
US	30-44 A-I
JP	65-100 B-J

PRICE



WE 149 004 UW CONTOUR BRA

- Smooth contour cups for a natural shape – same cups as Lace Essentiel WE 136 004 Contour Bra
- Delicate thin binding along the neck edge for a flat finish, that sits flat against the body
- Sleek, ultra-smooth and soft outer cup fabric
- Stunning embroidered outer cup sling
- Powermesh wings with scooped centre back for support and to ensure straps stay in place
- Fully adjustable straps
- Soft touch hook and eye adjustment



UK	34-38 B	32-40 C	30-40 D-E	32-38 F
EU	75-85 B	70-90 C	65-90 D-F	70-85 G
FR	90-100 B	85-105 C	80-105 D-F	85-100 G
AUS/NZ	12-16 B	10-18 C	8-18 D-E	10-16 F
US	34-38 B	32-40 C	30-40 D-DDD	32-38 G
JP	75-85 C	70-90 D	65-90 E-G	70-85 H



UK	30-44 A-G
EU	65-100 A-I
FR	80-115 A-I
AUS/NZ	8-22 A-G
US	30-44 A-I
JP	65-100 B-J

PRICE



WE 149 005 BRIEF

- Mid-rise waist with medium back coverage
- Embroidered side panels
- Spot mesh front panel lined with a soft handle fabric for modesty
- Two-ply sheer mesh back panel, folded at the leg edge to give a flat finish and avoid VPL

S, M, L, XL

PRICE



WE 149 007 TANGA

- Low-rise waist with minimal back coverage
- Stunning embroidered front panel lined with soft handle lining
- Spot mesh side and back panels
- Guipure motif detail adorns the centre back

S, M, L, XL

PRICE



WE 149 010 FULL BRIEF

- Decorative embroidered side panels
- Spot mesh at centre front and leg panels
- Centre front panel is lined with soft handle lining
- Two-ply sheer mesh back panel, folded at the leg edge to give a flat finish and avoid VPL

S, M, L, XL

PRICE

EGLANTINE

Eglantine strikes a refined note for AW22 in new colourway Argent. Crafted from a decorative stretch lace, Eglantine is renowned for achieving the perfect blend of comfort and everyday elegance. This season the collection boasts two new styles too, with the introduction of an UW Plunge Bra and Tanga co-ordinate. With so many styles to choose from, what's not to love?



ARGENT (ART)
Fashion/ Available:



BLACK (BLK)
Continuity



CRÈME BRULÉE (CBE)
Continuity



INK (INK)
Continuity



KASUMI (KAI)
Continuity



WHITE (WHE)
Continuity



WE BFA 662 UW BRA

- All-lace cup with built-up lace front straps
- Top cup has scallop at neckline with elastic to maintain fit
- Bottom cup is lined with tulle
- Hidden side sling in tulle
- All-lace frame and side back
- Stretch-satin straight back
- Fully adjustable straps
- Soft touch hook and eye adjustment



UK	32-38 B	32-40 C-E
EU	70-85 B	70-90 C-F
FR	85-100 B	85-105 C-F
AUS/NZ	10-16 B	10-18 C-E
US	32-38 B	32-40 C-DDD
JP	70-85 C	70-90 D-G



UK	30-44 A-G
EU	65-100 A-I
FR	80-115 A-I
AUS/NZ	8-22 A-G
US	30-44 A-I
JP	65-100 B-J

PRICE



WE BFA 362 UW PLUNGE BRA

- Based on the signature WE 135 003 Lace Perfection UW Plunge Bra
- High apex lace outer cup with dart
- Plunging neckline
- Ultra-soft and light push up pad gives cleavage, uplift and adds dimension
- Graduated foam mould cups give extra dimension and push up at base of cup, but maintains a thin and light neck edge for a smooth finish
- Centre front V-styling
- Stretch satin wings gives a smooth feminine appearance, whilst offering strength and support
- Delicate scalloped lace edge along the neckline
- Fully adjustable straps
- Soft touch hook and eye adjustment

UK	32-36 A	30-38 B-D	30-36 DD
EU	70-80 A	65-85 B-D	65-80 E
FR	85-95 A	80-100 B-D	80-95 E
AUS/NZ	10-14 A	8-16 B-D	8-14 DD
US	32-36 A	30-38 B-D	30-36 DD
JP	70-80 B	65-85 C-E	65-80 F

PRICE



WE BFA 162 NON WIRED BRA

- All-lace cup with built-up lace front straps
- Top cup has scallop at neckline with elastic to maintain fit
- Bottom cup is lined with rigid tricot
- Foam side support which lifts and holds bust
- All-lace frame and side back
- Stretch-satin leotard back
- Fully adjustable straps
- Soft touch hook and eye adjustment

UK	32-38 B-D
EU	70-85 B-D
FR	85-100 B-D
AUS/NZ	10-16 B-D
US	32-38 B-D
JP	70-85 C-E

PRICE



WE PFA 762 TANGA

- Low rise waist with minimal back coverage
- Lace scallop edge along the front leg
- Lower front solid microfiber fabric for modesty and comfort
- Free cut back leg edge sits flat to the body to avoid VPL

S, M, L, XL

PRICE



WE PFA 962 BRIEF

- Stretch lace side panels with scallop at waistline maintains comfort and reduces binding
- Stretch micro-back with full coverage



S, M, L, XL



S, M, L, XL, XXL

PRICE



WE PFA 862 CONTROL BRIEF

- Stretch lace front panel with scallop at waistline maintains comfort and reduces binding
- Fully lined front gives tummy control, smooths and flattens
- Stretch micro-back with full coverage

M, L, XL, XXL

PRICE

HALO LACE

A true trademark collection for the Wacoal brand, Halo Lace for AW22 returns in seasonal Zinfandel. Crafted from super soft stretch Helenca floral lace, Halo Lace champions everyday wear and support without sacrificing on style. Be sure to cast your eyes over the complete Halo Lace collection too with a selection of styles available in core continuity colours Black, Ivory and Naturally Nude.



ZINFANDEL (593)
Fashion/Available:



BLACK (BLK)
Continuity



IVORY (IVY)
Continuity



NATURALLY NUDE (NUE)
Continuity



WA 851 205 UNDERWIRE MOULDED BRA

- Moulded stretch brushed back all-over lace is soft and smooth against the body
- Unlined seamless cups offer a smooth, natural shape
- Fully adjustable straps
- J Hook strap adjustment allows this bra to be worn as a racerback
- Hook and eye adjustment



UK	34-38 B	32-38 C	32-40 D-DD	32-38 E	32-36 F
EU	75-85 B	70-85 C	70-90 D-E	70-85 F	70-80 G
FR	90-100 B	85-100 C	85-105 D-E	85-100 F	85-95 G
AUS/NZ	12-16 B	10-16 C	10-18 D-DD	10-16 E	10-14 F
US	34-38 B	32-38 C	32-40 D-DD	32-38 DDD	32-36 G
JP	75-85 C	70-85 D	70-90 E-F	70-85 G	70-80 H



UK	34-38 B	32-40 C	30-40 D-E	30-36 F
EU	75-85 B	70-90 C	65-90 D-F	65-80 G
FR	90-100 B	85-105 C	80-105 D-F	80-95 G
AUS/NZ	12-16 B	10-18 C	8-18 D-E	8-14 F
US	34-38 B	32-40 C	30-40 D-DDD	30-36 G
JP	75-85 C	70-90 D	65-90 E-G	65-80 H

PRICE



J Hook



J Hook



WA 811 205 WIRE FREE SOFT CUP BRA

- Deep V-centre
- Two section cup with wide stretch lace to the neck edge
- Fully lined cups for opacity
- All-over stretch lace bottom band
- J Hook strap adjustment allows this bra to be worn as a racerback
- Hook and eye adjustment



UK	32-40
EU	70-90
FR	85-105
AUS/NZ	10-18
US	32-40
JP	70-90



UK	30-40
EU	65-90
FR	80-105
AUS/NZ	8-18
US	30-40
JP	65-90

PRICE



WA 854 205 STRAPLESS BRA

- Moulded strapless bandeau underwire bra
- Shirring at centre gore gives added definition and separation
- *Stay4Sure* gripper elastic runs along the perimeters of the bra so you can feel confident the garment will not move in wear
- Fully adjustable, detachable straps allow this bra to be worn over the shoulders or cross back
- Elastic along top of bra has intermittent slots for strap hooks, giving a wide variety of positions and configurations
- Hook and eye adjustment

UK	32-38 B-E
EU	70-85 B-F
FR	85-100 B-F
AUS/NZ	10-16 B-E
US	32-38 B-DDD
JP	75-85 C-G

PRICE



WA 878 205 BIKINI BRIEF

- Helenca pattern lace
- Wide stretch lace waistband

S, M, L, XL

PRICE



WA 879 205 THONG

- Helenca pattern lace
- Wide stretch lace waistband

S, M, L, XL

PRICE



WA 870 405 FULL BRIEF

- Helenca pattern lace
- Flattering style lines enhance the body's natural curves
- Wider stretch lace waistband for additional comfort

S, M, L, XL

PRICE

NEW

BACK APPEAL

Back Appeal's simple yet stylish designs receive a warm welcome as they make their debut for AW22. We know that finding the perfect fit is so important, and that's why the two bras featured in the Back Appeal collection are designed to contour and shape. The Underwire Bra features supportive cups, and a specially designed band that minimises bulge, for the perfect solution to a sleek silhouette. The Minimiser Bra has been designed to reduce the bust line and smooth across the back. Both styles featured are available in Black and Rose Dust.



BLACK (BLK)

New Continuity/Available:



ROSE DUST (253)

New Continuity/Available:



WA 855 303 UNDERWIRE BRA

- Back and side smoothing underwire bra
- Supportive cups covered with pretty dot jacquard fabric with accent sheen
- Hidden sling in cups for added support
- Microthin spacer fabric band, designed to minimise back and side bulge, concealed with pretty dot jacquard fabric
- Fully adjustable straps with matching dot detail
- Hook and eye back closure

UK	34-40 C	32-40 D-F	34-40 FF
EU	75-90 C	70-90 D-G	75-90 H
FR	90-105 C	85-105 D-G	90-105 H
AUS/NZ	12-18 C	10-18 D-F	12-18 FF
US	34-40 C	32-40 D-G	34-40 H
JP	75-90 D	70-90 E-H	75-90 I

PRICE



WA 857 303 MINIMIZER BRA

- Cups minimise bustline up to 1 inch and offer natural shaping
- Full coverage back and side smoothing underwire bra
- Specially designed band minimises back and side bulge
- Close-set straps minimise slipping
- Fully adjustable straps with matching dot detail
- Hook and eye back closure

UK	34-40 C	34-42D	32-42 DD-F	34-40 FF
EU	75-90 C	75-95 D	70-95 E-G	75-90 H
FR	90-105 C	90-110 D	85-110 E-G	90-105 H
AUS/NZ	12-18 C	12-20 D	10-20 DD-F	12-18 FF
USA	34-40 C	34-42 D	32-42 DD-G	34-40 H
JP	75-90 D	75-95 E	70-95 F-H	75-90 I

PRICE

LE MINIMIZER

For AW22 we welcome the return of our Le Minimizer collection. Designed to slim the appearance of and minimise the bust, our minimiser bra works by redistributing the breast tissue in a way that reduces how far the bust projects forward, whilst supporting and shaping at the same time. We've combined functionality with a feminine note too, as our Le Minimizer UW Bra features a beautiful leavers lace cup, detailing at the straps and satin accents. Available in Argent for AW22.

 ARGENT (ART)
Fashion/Available:

 BLACK (BLK)
Continuity

 IVORY (IVY)
Continuity

 NUDE (NUE)
Continuity



WE BFA 105 UW BRA

- Stretch satin band provides the necessary comfort to the breast and improves placement of the bust in the cup for a more discreet shape
- Beautiful rigid lace is stitched with flat seams for a perfectly formed supportive cup. It softens the bust shape to reduce the appearance and projection for a minimised effect
- Back offers greater support through the wider band and deeper wings. Essential for fuller figure sizing
- Rigid lace front strap overlays the fixed adjustable straps, for increased fit and support
- Hook and eye adjustment

UK	34-42 D	32-42 DD-E
EU	75-95 D	70-95 E-F
FR	90-110 D	85-110 E-F
AUS/NZ	12-20 D	10-20 DD-E
US	34-42 D	32-42 DD-DDD
JP	75-95 E	70-95 F-G

PRICE

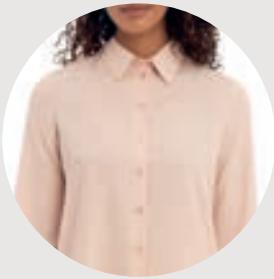
THE BENEFITS OF A MINIMISER

Designed to slim the appearance of and minimise the bust, Minimiser Bras work by redistributing the breast tissue in a way that reduces how far the bust projects forward.

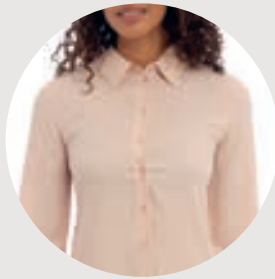
Within our AW22 edit there are three Minimisers. These can be found in Raffiné, Back Appeal and this Le Minimizer collection.

All three bras have been designed to minimise the bustline by up to 1 inch whilst offering natural shaping and a comfortable, supportive fit.

Wearing a Minimiser Bra can aid with the fitting of tighter clothing across the bust, such as shirts or buttoned styles that can be prone to gaping or pulling.



FRONT VIEW WITH A MINIMISER BRA



FRONT VIEW WITHOUT A MINIMISER BRA

NEW

CRYSTAL FLOWER

Meticulously crafted with care, for AW22 we introduce all-new Crystal Flower. We adore how the exposed seam work and tattoo-like motifs rest upon a Maple Sugar coloured sheer tulle; each style melting into your skin as we invite your body to play part of the design story. The embroidered stitch work captures the beauty of flowers in bloom, and with sparkling diamante details, Crystal Flower is a luxurious offering for the new season.



MAPLE SUGAR (MSR)
Fashion / Available:



WE 600 606 UW BALCONY BRA



- True balconette neckline with wider set straps
- Scallop edge embroidery top cup, lined with rigid tulle for shape and support
- Sheer fine elastic at neckline to maintain fit
- Two section lined bottom cup for a supportive and uplifting fit
- Inner tulle cup sling gives additional support
- Flower embroidery motifs on cup with diamante detailing
- Stylish black contrast seam tape along the overbust and bottom cup seams
- Dropped centre front detail with diamante charm
- Powernet back offers a secure fit and support for all day wear
- Underwires vary in strength across sizes to offer a customised level of support and shape
- Fully adjustable decorative straps
- Soft touch hook and eye adjustment

UK	34-38 B	32-38 C	30-38 D-F
EU	75-85 B	70-85 C	65-85 D-G
FR	90-100 B	85-100 C	80-100 D-G
AUS/NZ	12-16 B	10-16 C	8-16 D-F
US	34-38 B	32-38 C	30-38 D-G
JP	75-85 C	70-85 D	65-85 E-H

PRICE



WE 600 602 UW PLUNGE BRA



- Lightly padded cut and sew cup
- Lower centre front and high apex style for a deep plunge neckline
- Scallop edge embroidery at neck edge of the top cup
- Flower embroidery motif at centre front with diamante detailing
- Stylish black contrasting seam tape along the overbust and bottom cup seams
- Powernet back offers a secure fit and support for all day wear
- Fully adjustable decorative straps
- Soft touch hook and eye adjustment

UK	32-36 A	30-38 B-DD	30-36 E
EU	70-80 A	65-85 B-E	65-80 F
FR	85-95 A	80-100 B-E	80-95 F
AUS/NZ	10-14 A	8-16 B-DD	8-14 E
US	32-36 A	30-38 B-DD	30-36 DDD
JP	70-80 B	65-85 C-F	65-80 G

PRICE



WE 600 655 BRIEF

- Mid-rise waist with medium back coverage
- Scallop edge embroidery at front waist
- Asymetric flower embroidery motif with diamante detailing
- Lined front panel for modesty
- Decorative back V keyhole detail
- Fold over elastic at front leg and back of waist
- Two-ply stretch mesh back panel, folded at the leg edge to give a flat finish and avoid VPL

S, M, L, XL

PRICE



WE 600 670 TANGA

- Mid-rise waist with minimal back coverage
- Scallop edge embroidery at front waist
- Asymetric flower embroidery motif with diamante detailing
- Lined front panel for modesty
- Silver rings at front sides
- Fold over elastic at back waist and leg edges

S, M, L, XL

PRICE

NEW

FLORILÈGE

Taking centre stage for AW22, Florilège is a brand new collection which has an exciting design story to tell. Through the advanced technique of yarn innovation, Japanese Mino 'Washi' paper yarn is intricately woven throughout the lace. This creates a soft-matte look and feel to the garments making Florilège stand out amongst other lace collections. Debuting for AW22 in two colourways: Peridot is a forest green and golden chartreuse blend, whilst Inky Flower plays host to a marl and charcoal grey pairing. Available styles include a newly designed Bralette, which features a deep wrap over front, and a new shape chemise which offers a relaxed fit for ease of wear.



PERIDOT (PRI)

Fashion / Available:



INKY FLOWER (INR)

New Continuity / Available:



WE 600 710 UW MOULDED SPACER BRA

- Smooth spacer contour cups for a natural rounded shape
- Lace detail at the centre front
- Soft touch supportive elastics ensure the garment stays in place
- Soft touch powermesh wings to give a feminine appearance whilst offering strength and support
- Underwires vary in strength across sizes to offer a customised level of support and shape
- Delicate bow detail at apex
- Fully adjustable straps feature two tone finish
- Soft touch hook and eye adjustment

UK	34-38 B	32-38 C	30-40 D-F
EU	75-85 B	70-85 C	65-90 D-G
FR	90-100 B	85-100 C	80-105 D-G
AUS/NZ	12-16 B	10-16 C	8-18 D-F
US	34-38 B	32-38 C	30-40 D-G
JP	75-85 C	70-85 D	65-90 E-H

PRICE



WE 600 701 UW BRA

- Three section average wire cup gives a natural shape
- Stretch lace top cup has a sheer fine elastic along the neck line to maintain fit
- Stretch lace overlay at bottom cup
- Powermesh bottom cup is lined and has a hidden dart for maximum shaping
- Intricate dropped centre front, adorned with stretch lace
- Powermesh wing for support and comfort
- Scoop centre back style offers optimum support and ensures straps stay in place
- Underwires vary in strength across sizes to offer a customised level of support and shape
- Delicate bow detail at centre front
- Fully adjustable straps feature two tone finish
- Soft touch hook and eye adjustment

UK	34-38 B	32-38 C-E	32-36 F
EU	75-85 B	70-85 C-F	70-80 G
FR	90-100 B	85-100 C-F	85-95 G
AUS/NZ	12-16 B	10-16 C-E	10-14 F
US	34-38 B	32-38 C-DDD	32-36 G
JP	75-85 C	70-85 D-G	70-80 H

PRICE



Back detail



WE 600 703 NON WIRED BRALETTE

- Delicate lace scallop runs along the neck edge, with sheer fine elastic offering stretch for flexibility of fit
- Gentle cup shaping designed to give soft cup support
- Top cup is unlined for a lighter look
- Deep wrap over at centre front for more coverage
- Lace back detail runs from shoulder strap down to underband
- Wide underband elastic offers added support, that will keep the bralette in place
- Fully adjustable straps feature two tone finish
- Soft touch hook and eye adjustment

S, M, L, XL

SIZE CONVERSION CHART

	A	B	C	D	DD
30	XS	XS	XS		
32	XS	XS	S	M	M
34	S	S	M	M	L
36	S	M	M	L	XL
38	M	L	XL	XL	

*Sizes are in UK sizing. Turn to page 70 for global sizing conversion.

PRICE



WE 600 755 BRIEF

- Mid-rise waist with full back coverage
- Lace front brief with lace scallop edging detail along the waist
- The back panel is made from an 82% cotton fabric
- Free cut back leg sits flat to the body to avoid VPL

S, M, L, XL

PRICE



WE 600 766 SHORT

- Mid-rise waist with medium back coverage
- Centre front fabric panel for comfort and modesty with a free cut leg edge
- Side lace panels
- The centre front and back panels are made from an 82% cotton fabric
- Back panel free cut leg edge sits flat to the body to avoid VPL

S, M, L, XL

PRICE



WE 600 770 TANGA

- Low-rise waist with minimal back coverage
- Full lace waist band with scallop edging
- Lace scallop edge along the front leg
- Lower front fabric panel for modesty and comfort
- Free cut 82% cotton content lower front and back panel
- Free cut back sits flat to the body to avoid VPL

S, M, L, XL

PRICE



WE 600 783 CHEMISE

- Easy wear pull over style
- V shaped stretch lace front panel with fold over elastic neckline
- Side darts and back seam for moderate shaping and fit
- MicroModal® fabric skirt, with Eco-Smart elastane, provides a soft handle finish and drape
- Sleeker skirt shape and shorter in length than the WE 148 011 Raffiné Chemise for a tailored look
- Fully adjustable narrow stretch straps that lay flat against the body for comfort

S, M, L, XL

PRICE

RAVISSANT

Closing the season, we complete the AW22 collection with Ravissant in Scarlet. A harmonious blend of elegant styling and luxurious lace all styles feature scallop edge detailing and a diamante trim. We're overjoyed with the new addition Body for AW22, beautifully crafted from a fine stretch floral lace. Featuring a plunge neckline, halter neck styling and an open back design, the Body, much like Ravissant's UW Bralette, is a stand out piece from the collection that can be worn on its own or styled as an outerwear piece.



SCARLET (SCT)
Fashion / Available:



BLACK (BLK)
Continuity
* New Continuity for WE 600 530 / Available:



DELICACY (DLY)
Limited Continuity



WE 600 506 UW BALCONY BRA

- Balcony neckline shape
- Two section lace outer cup
- Delicate scallop lace top cup lies flat against the skin with some stretch for comfort and flexibility of fit
- Sheer fine elastic at neckline to maintain fit
- Stretch lace bottom cup lined with two section charmeuse, offering strength and support
- Inner charmeuse cup sling gives additional support
- Lace top cup is lined in the larger sizes for extra support and to maintain fit
- Side cradle features lace for added femininity
- Dropped centre front with diamante charm detail
- Powernet back offers a secure fit and support for all day wear
- Front strap has small rouleau detail
- Fully adjustable straps
- Hook and eye adjustment

UK	34-38 B	32-38 C	30-38 D-F
EU	75-85 B	70-85 C	65-85 D-G
FR	90-100 B	85-100 C	80-100 D-G
AUS/NZ	12-16 B	10-16 C	8-16 D-F
US	34-38 B	32-38 C	30-38 D-G
JP	75-85 C	70-85 D	65-85 E-H

PRICE



WE 600 512 UW BRALETTE

- Based on the WE 119 012 Chrystalle UW Bralette
- Stretch lace cups and body
- Low centre front detailing finished with a diamante charm detail
- Light flexible underwire for light support and flexibility to fit multiple sizes
- Inner charmeuse cup sling gives additional support
- Sheer fine elastic at neckline to maintain fit
- Mesh upper back for a secure fit
- Fully adjustable straps
- Hook and eye fastening with low keyhole back



Back detail

XS, S, M, L, XL

SIZE CONVERSION CHART				
	B	C	D	DD
32	S	S	M	M
34	S	M	M	L
36	M	L	L	XL
38	L	XL	XL	

*Sizes are in UK sizing. Turn to page 70 for global sizing conversion.

PRICE



WE 600 502 UW PLUNGE BRA

- Based on the signature WE 135 003 Lace Perfection UW Plunge Bra
- High apex lace outer cup with dart
- Plunging neckline
- Ultra-soft and light push up pad gives cleavage, uplift and adds dimension
- Graduated foam mould cup, gives extra dimension and push up from the base of the cup, but maintains a thin and light neck edge for a smooth finish
- Centre front V-styling with diamante charm detail
- Powernet back offers a secure fit and support for all day wear
- Delicate scalloped lace edge along the neckline with sheer fine elastic at neckline to maintain fit
- Feminine scallop edge lace insert detailing at back wing
- Fully adjustable straps
- Hook and eye adjustment

UK	32-36 A	30-38 B-D	30-36 DD
EU	70-80 A	65-85 B-D	65-80 E
FR	85-95 A	80-100 B-D	80-95 E
AUS/NZ	10-14 A	8-16 B-D	8-14 DD
US	32-36 A	30-38 B-D	30-36 DD
JP	70-80 B	65-85 C-E	65-80 F

PRICE



WE 600 555 BRIEF

- Mid-rise waist with full back coverage
- Stretch lace front and back
- Flattering contoured front lining in stretch mesh for modesty and comfort
- Lace scallop edging along front waist and back leg to avoid VPL
- Centre front diamante charm detail

XS, S, M, L, XL

PRICE



WE 600 566 SHORT

- Low-rise waist with medium back coverage
- Lace front short with light waist elastic and scallop edging
- Two-ply mesh back with leg edge on the fold to help sit flat to the body to avoid VPL
- Centre front with diamante charm detail

S, M, L, XL

PRICE



WE 600 570 TANGA

- Low-rise waist with minimal back coverage
- Stretch lace front and back
- Flatteringly contoured front liner for extra coverage and modesty
- Lace scallop edging along the leg line
- Centre back keyhole detail with diamante charm

XS, S, M, L, XL

PRICE



Back detail



WE 600 530 BODY

- Deep V plunge neckline
- Stretch lace front and back
- Lace scallop edging at the legs, underarm and neck edge
- Halterneck strap with adjustable slide
- High leg full lace tanga with waist seam and inner front lining stretch mesh panel for modesty
- Back waist strap with adjustable slide
- Adjustable popper fastening at gusset for comfort and fit
- Cotton lined gusset

S, M, L, XL

PRICE



AN EXPRESSION
OF ELEGANCE AND
SOPHISTICATION

AWARENESS



BLACK (BLK)
Continuity



NATURALLY NUDE (NUE)
Continuity



WA 085 567 SEAMLESS UNDERWIRED BRA

UK	34-44 C	32-44 D-E	32-44 F	34-44 FF	34-40 G
EU	75-100 C	70-100 D-F	70-100 G	75-100 H	75-90 I



WA 085 276 SOFT CUP BRA

UK	34-40 B	34-44 C-E
EU	75-90 B	75-100 C-F

BASIC BEAUTY



BLACK (BLK)
Continuity



IVORY (IVY)
Continuity



NATURALLY NUDE (NUE)
Continuity



WA 853 192 CONTOUR SPACER BRA

UK	32-40 C	30-44 D-E	32-40 F
EU	70-90 C	65-100 D-F	70-90 G



WA 855 192 FULL FIGURE UNDERWIRE BRA

UK	34-44 C	32-44 D-F	34-44 FF
EU	75-100 C	70-100 D-G	75-100 H

UK	34-42 C	32-44 D-E	34-42 F-FF
EU	75-95 C	70-100 D-F	75-95 G-H

B SMOOTH

- BLACK (BLK)
Continuity
- NATURALLY NUDE (NUE)
Continuity



WA 835 275 BRALETTE

UK	32-38
EU	70-85



WA 834 175 HI-CUT BRIEF

S, M, L, XL, XXL

GLOIRE

- BLACK (BLK)
Continuity
- MACAROON (MCN)
Continuity



WE 600 307 UW CONTOUR BRA

UK	32-40 C	30-40 D-E	32-38 F
EU	70-90 C	65-90 D-F	70-85 G



WE 600 303 NON WIRED BRALETTE

S, M, L, XL



WE 600 355 BRIEF

S, M, L, XL



WE 600 370 TANGA

S, M, L, XL

INSTANT ICON

BLACK ECLIPSE (963)
Continuity

CAFÉ AU LAIT (286)
Continuity



WA 851 322 UNDERWIRE BRA

UK	32-38 B-C	32-40 D-DD	32-38 E	34-38 F
EU	70-85 B-C	70-90 D-E	70-85 F	75-85 G



WA 853 322 CONTOUR BRA

UK	34-38 B	32-40 C	30-40 D-E	32-38 F
EU	75-85 B	70-90 C	65-90 D-F	70-85 G



WA 810 322 NON WIRED BRALETTE

S, M, L, XL



WA 843 322 BIKINI BRIEF

S, M, L, XL



WA 842 322 THONG


S, M, L, XL




WA 814 322 CHEMISE

S, M, L, XL, XXL



LACE AFFAIR

- 

BLACK/GRAPHITE (490)
Continuity
- 

ROSE DUST/ANGEL WING (285)
Continuity







WA 851 256 UNDERWIRE BRA

UK	32-38 B-C	32-40 D-DD	32-38 E	34-38 F
EU	70-85 B-C	70-90 D-E	70-85 F	75-85 G


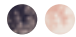




WA 853 256 CONTOUR BRA

UK	34-38 B	32-40 C	30-40 D-E	32-38 F
EU	75-85 B	70-90 C	65-90 D-F	70-85 G





WA 852 256 BRALETTE

UK	30-40 A/B	30-40 C/D
EU	65-90 A/B	65-90 C/D





WA 846 256 BIKINI BRIEF

S, M, L, XL





WA 845 256 TANGA

S, M, L, XL





WA 812 256 CHEMISE

S, M, L, XL

LISSE



BLACK (BLK)
Continuity



FRAPPE (FRP)
Continuity



WHITE (WHE)
Continuity



WE 145 001 UNDERWIRE MOULDED NON
PADDED BRA

UK	34-38 B	32-38 C-DD	32-36 E
EU	75-85 B	70-85 C-E	70-80 F



WE 145 002 UNDERWIRE BRA

UK	34-40 B	32-40 C	30-40 D-F
EU	75-90 B	70-90 C	65-90 D-G



WE 145 003 NON WIRED BRA

S, M, L, XL



WE 145 004 UNDERWIRE MOULDED
SPACER BRA

UK	34-40 B	32-40 C	30-40 D-F
EU	75-90 B	70-90 C	65-90 D-G



WE 145 005 BRIEF

S, M, L, XL, XXL



WE 145 007 TANGA

S, M, L, XL



WE 145 008 FULL BRIEF

S, M, L, XL, XXL

NET EFFECTS

- BLACK (BLK)
Continuity
- ROSEDUST (253)
Continuity



WA 810 340 BRALETTE		
UK	32-38	40-42
EU	70-85	90-95



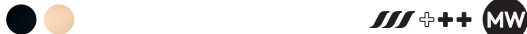
WA 845 340 BOYSHORT		
S, M, L, XL		

RED
CARPET

- BLACK (BLK)
Continuity
- SAND (SAD)
Continuity (WA 801 219 only)
- NUDE (NUE)
Continuity (WA 854 119 only)



WA 801 219 BODYBRIEFER		
UK	30-40 C-E	34-38 F
EU	65-90 C-F	75-85 G



WA 854 119 STRAPLESS WIRE BRA						
UK	34-38 B	32-42 C	30-44 D-DD	30-42 E	30-40 F	34-38 FF-G
EU	75-85 B	70-95 C	65-100 D-E	65-95 F	65-90 G	75-85 H-I


NATURAL BEAUTY
ENHANCED BY
EXQUISITE DESIGN



WACOAL RESHAPE

BEYOND NAKED

 BLACK (BLK)
Continuity

 MACAROON (MCN)
Continuity



WE 121 004 BRA TOP

S, M, L, XL, XXL



 CONTROL LEVEL LIGHT

RS

WE 121 005 SHAPING BRIEF

S, M, L, XL, XXL



 CONTROL LEVEL LIGHT

RS

WE 121 008 SHAPING CAMISOLE

S, M, L, XL



 CONTROL LEVEL LIGHT

RS

WE 121 009 SHAPING DRESS

S, M, L, XL



 CONTROL LEVEL LIGHT


RS

WE 121 010 SHAPING BODY

S, M, L, XL

BEYOND NAKED

 BLACK (BLK)
Continuity

 MACAROON (MCN)
Continuity




   CONTROL LEVEL MODERATE 

WE 121 006 THIGH SLIMMER

S, M, L, XL

FIT & LIFT™

 BLACK (BLK)
Continuity

 MACAROON (MCN)
Continuity



   CONTROL LEVEL MODERATE 

WE 137 006 LONG LEG SHAPER

S, M, L, XL





   CONTROL LEVEL MODERATE 

WE 137 008 HIGH WAIST LONG LEG SHAPER

S, M, L, XL

BEAUTY SECRET

-  BLACK (BLK)
Continuity
-  SKIN (SKN)
Continuity



   CONTROL LEVEL FIRM 

WE GRA 331 SLIMMING PANTY

S, M, L, XL, XXL



   CONTROL LEVEL FIRM 

WE GRA 231 HIGH WAIST SLIMMING BRIEF

S, M, L, XL, XXL

WACOAL'S DIGITAL HUB

More than ever, we know how important it is that you have the tools you need to enhance your online and social media presence.

Here at Wacoal we've built a Digital Asset Hub, Swivle, which is designed to help you do exactly that.

Every season on Swivle you will be able to access all of our product images, videos, readymade assets for your social channels and even web banners for your website and emails. We also offer special themed assets for key occasions in the year as well as fitting assets.



UK



France



Germany



USA



Canada



Poland



Netherlands



Spain

Swivle is currently available across 8 countries, and to get started all you need to do is follow one of the QR codes above, which are labelled by country, to explore your personalised Digital Asset Hub. Please use the password **wacoal** to access all pages.

If you are new to Swivle, you'll also find a how-to video to guide you on using the hub, as well as helpful training guides for social, website, SEO and paid social. If you have any queries, or to receive the latest information on Swivle, please speak to your Sales Rep.

QR CODES

To use the QR codes place your camera over the selected square, wait for a link to show and select it. You will then be taken to your chosen country's Digital Asset Hub.

For the best user experience, please scan the QR codes using an iPad or a Tablet.

OUR POS

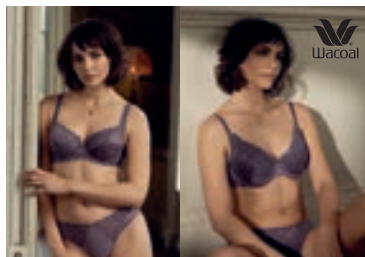
Point of sale pieces are a great way to bring attention to new collections in your store.

This season, to support you, our retail partners, we'll be sending out a selection of showcards and banners as pictured below. All POS items will be sent out automatically, collection at a time, and will arrive with the product ordered on the month of launch.

In order to receive any of our seasonal POS items you must order 10+ units of the key style as per the picture and style code below.

For example, the Raffiné showcard features WE 148 001 and matching co-ordinate WE 148 005 but the key style piece is the WE 148 001 Bra, which would require a minimum order of 10 pieces to receive the POS.

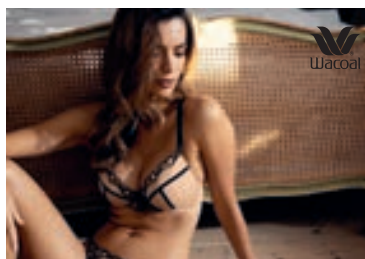
SHOWCARD



Eglantine
WE BFA 362 / WE BFA 662

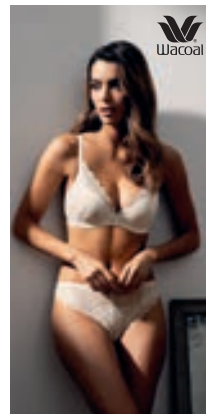


Raffiné
WE 148 001



Crystal Flower
WE 600 602

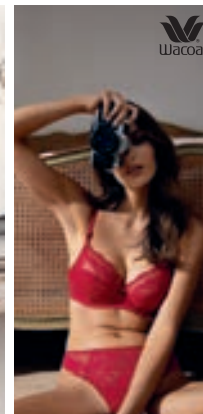
BANNER



Lace Perfection
WE 135 003



Embrace Lace
WA 853 291



Ravissant
WE 600 506

SIZES WITHOUT SURPRISES

Missing sizes without surprises?

Rest assured, our handy conversion charts, designed to help you find the right bra and brief size wherever you may be in the world, haven't disappeared. Simply scan the QR code below to digitally access Wacoal's international size guide.



Please note: Banner Size: 1000mm x 495mm. Showcard size: 420mm x 297mm. POS is subject to change.

WE 600 602 / WE 600 670



UK, IRELAND & REST OF THE WORLD

Wacoal EMEA Ltd. The Corsetry Factory, Rothwell Road, Desborough, Northamptonshire NN14 2PG, UK

Tel: +44 (0) 1536 760282 Fax: +44 (0) 1536 762149 Email: orders@wacoal-europe.com

WACOAL EUROPE SAS (PARIS)

81 rue Saint-Lazare 75009 Paris, France

Tel: + 33 (0) 1 42 81 04 93

WACOAL EUROPE SAS (LYON)

4, Allée Du Moulin Berger 69130 Ecully, Lyon, France

Tel: +33 (0) 4 37 59 80 37 Fax: + 33 (0) 4 78 35 34 83

WACOAL AUSTRALIA PTY LTD.

249 Brunswick Road, Brunswick, Victoria 3056

Tel: +61 3 9326 0318

Email: australia.enquiries@wacoal-europe.com australian.orders@wacoal-europe.com

NEW ZEALAND

Rich Pickings: Kathleen Ritchie

Tel/Fax: 0064 9 411 9174

Email: mail@richpickings.co.nz



WACOAL-EUROPE.COM



WWW.WACOALLINGERIE.COM